



**AUDIO VIDEO PROFESSIONNEL**

# **Windows 2000**

## **Installation guide : USB drivers**

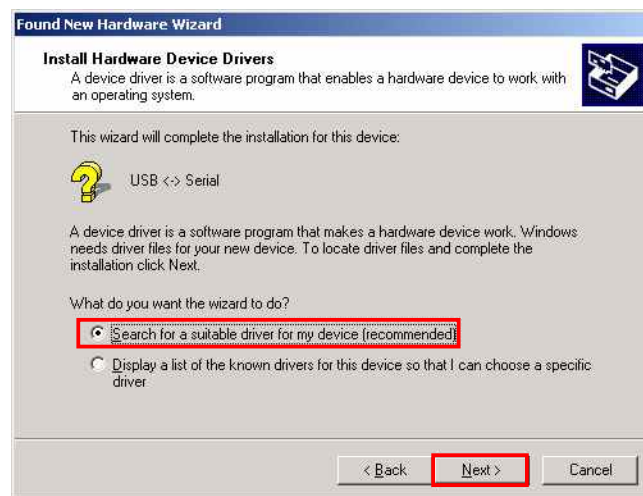
- Connect the AFFseries or the USB 50 to a spare USB port on your PC.



- Once the composite driver has been installed the Found New Hardware Wizard will launch. Click "Next" to proceed with the installation.



- Select "Search for a suitable driver for my device (recommended)" as shown below and then click "Next".



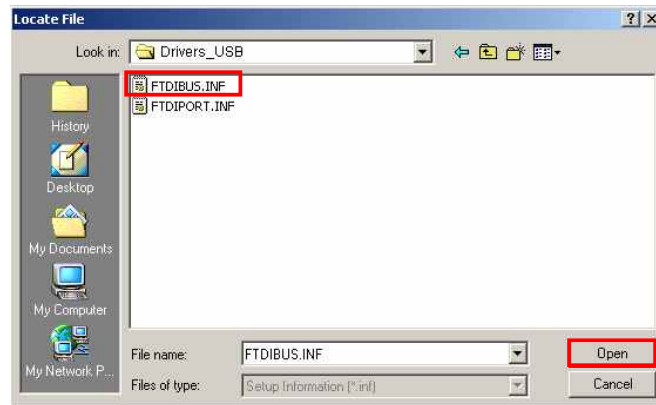
- Check the box next to "Specify a location" and uncheck all others as shown below.



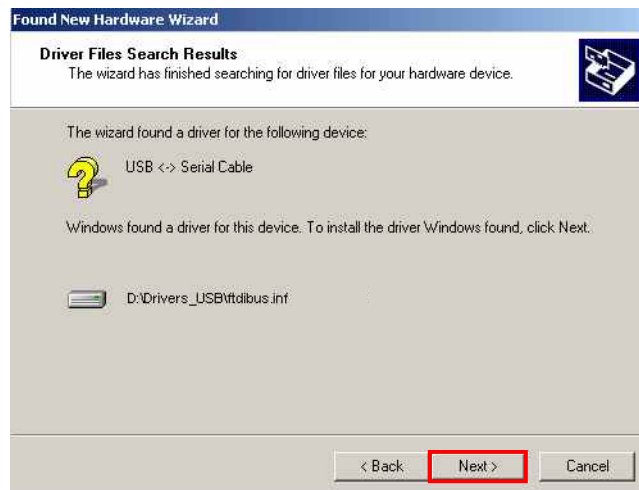
- Clicking "Next" displays a dialog box for you to enter to the location of the drivers.



- Click "Browse" to display an open file dialog box.



- Locate the folder containing the drivers on the CD ROM AMIX and click "Open", then click "OK". The PC autoselects the correct INF file, in this case FTDIBUS.INF. Once Windows has found the required driver .INF file, click "Next" to proceed.



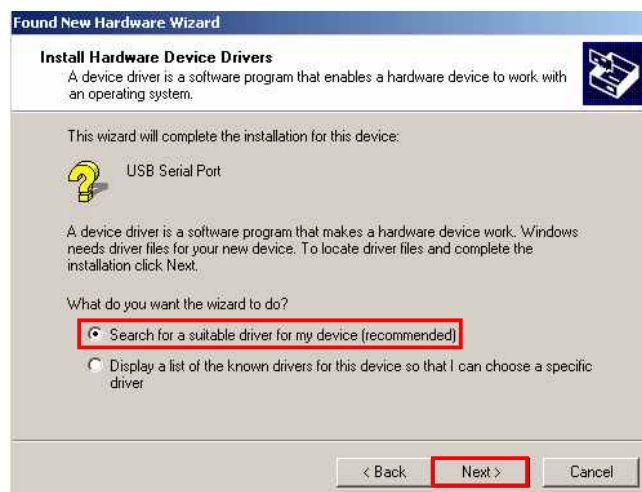
- Windows should then display a message indicating that the installation was successful. Click "Finish" to complete the installation for the serial converter driver for this port of the device. The COM port emulation driver must be installed after this has completed.



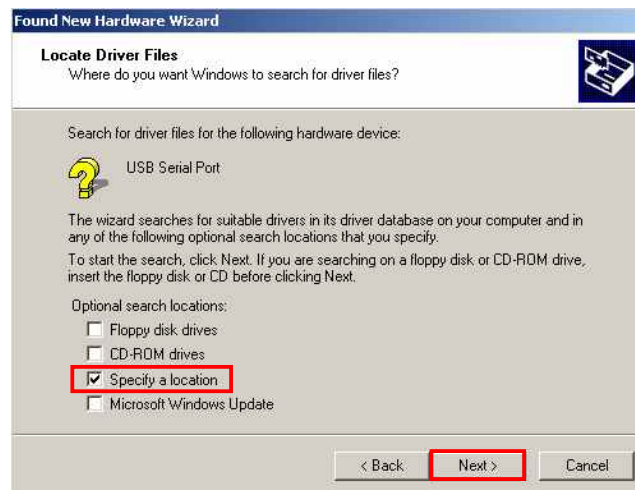
- The procedure for installing the second port is identical to that for installing the first port from the first screen of the Found New Hardware Wizard.



- Select "Search for a suitable driver for my device (recommended)" as shown below and then click "Next".



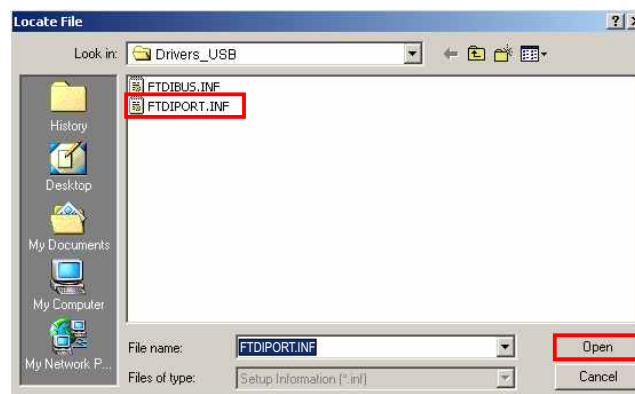
- Check the box next to "Specify a location" and uncheck all others as shown below.



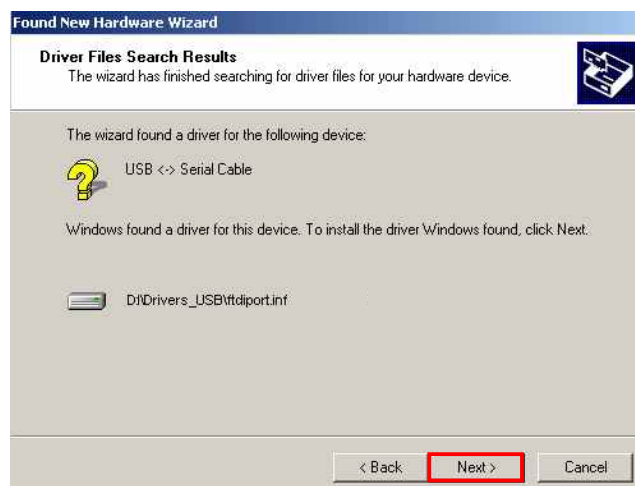
- Clicking "Next" displays a dialog box for you to enter to the location of the drivers.



- Click "Browse" to display an open file dialog box.



- Locate the folder containing the drivers on the CD ROM AMIX and click "Open", then click "OK". The PC autoselects the correct INF file, in this case FTDIPORT.INF. Once Windows has found the required driver .INF file, click "Next" to proceed.



- Windows should then display a message indicating that the installation was successful. Click "Finish" to complete the installation for this port of the device.



**The drivers are installed and now you can use your AFFseries or your SNA device**