



AUDIO VIDEO PROFESSIONNEL

Windows XP

Installation guide : USB drivers

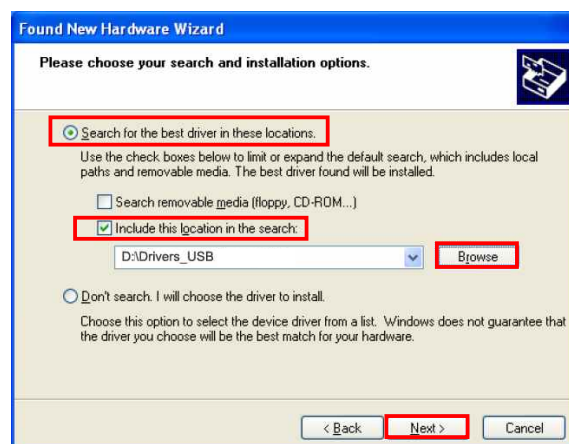
- Connect the AFFseries or the USB 50 to the PC. Select "No, not this time" from the options available and then click "Next" to proceed with the installation.



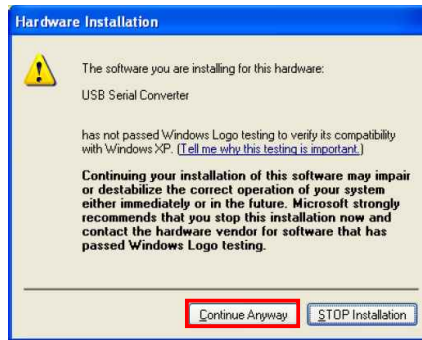
- Select "Install from a list or specific location (Advanced)" as shown below and then click "Next".



- Select "Search for the best driver in these locations" and enter the file path on the CD ROM AMIX in the combo-box ("D:\Drivers_USB" in the example below) or browse to it by clicking the browse button. Once the file path has been entered in the box, click next to proceed.



- If Windows XP is configured to warn when unsigned (non-WHQL certified) drivers are about to be installed, the following screen will be displayed unless installing a Microsoft WHQL certified driver. Click on "Continue Anyway" to continue with the installation. If Windows XP is configured to ignore file signature warnings, no message will appear.



- The following screen will be displayed as Windows XP copies the required driver files.



- Windows should then display a message indicating that the installation was successful. Click "Finish" to complete the installation for the first port of the device.



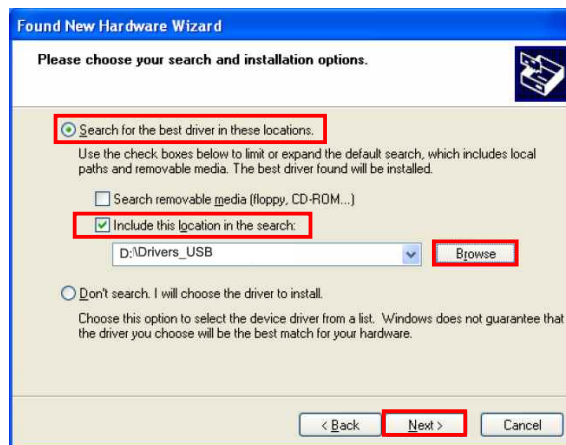
- The Found New Hardware Wizard will launch automatically to install the COM port emulation drivers. As above, select "No, not this time" From the options and click "Next" to proceed with the installation.



- Select "Install from a list or specific location (Advanced)" as shown below and then click "Next".



- Select "Search for the best driver in these locations" and enter the file path on the CD ROM AMIX in the combo-box ("D:\Drivers_USB" in the example below) or browse to it by clicking the browse button. Once the file path has been entered in the box, click next to proceed.



- If Windows XP is configured to warn when unsigned (non-WHQL certified) drivers are about to be installed, the following screen will be displayed unless installing a Microsoft WHQL certified driver. Click on "Continue Anyway" to continue with the installation. If Windows XP is configured to ignore file signature warnings, no message will appear.



- The following screen will be displayed as Windows XP copies the required driver files.



- Windows should then display a message indicating that the installation was successful. Click "Finish" to complete the installation for the second port of the device.



The drivers are installed and now you can use your AFFseries or your SNA device